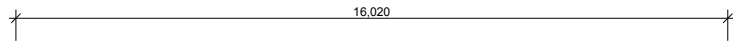




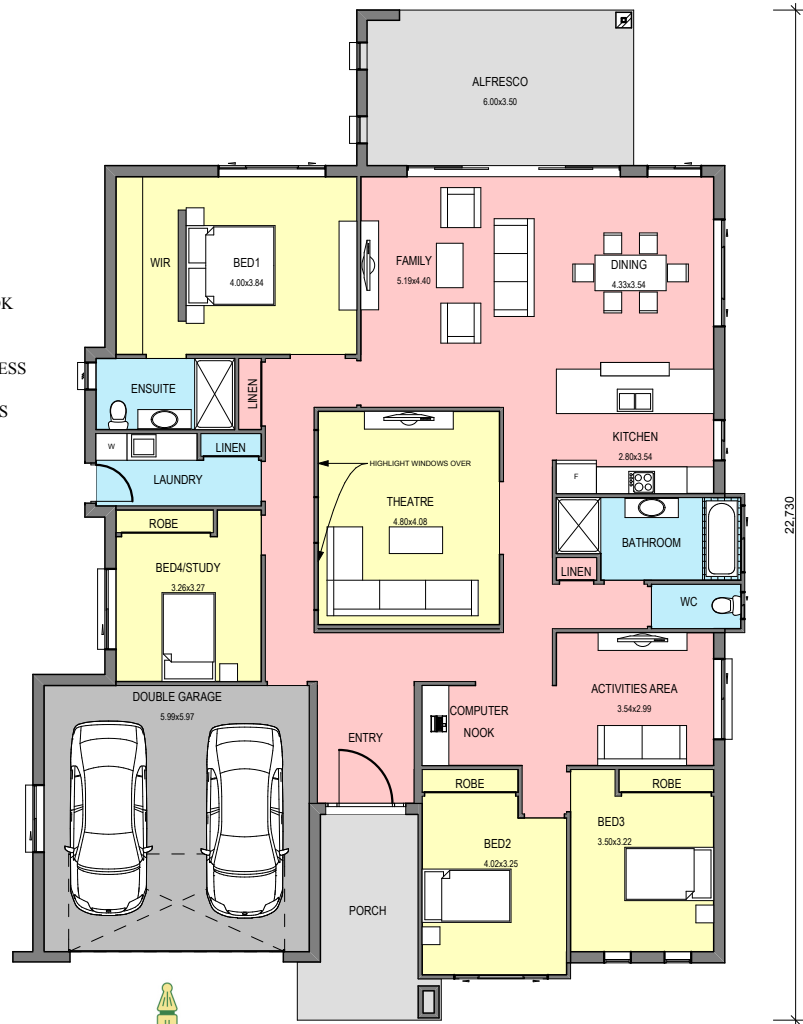
The Le Mans 31



INCLUSIONS

- QUALITY FINISHED HOMES
- SPACIOUS SEPARATE LIVING FAMILY ROOMS
- LARGE, QUALITY KITCHEN
- IMPRESSIVE RAKED CEILING THEATRE ROOM
- 4 BEDROOMS WITH BUILT IN ROBES
- BED 1 WITH WIR AND ENSUITE
- SEPARATE CHILDREN'S ACTIVITIES AREA AND STUDY NOOK
- DOUBLE GARAGE WITH INTERNAL ACCESS
- BATHROOM WITH SEPARATE WC
- LARGE OUTDOOR LIVING AREA/ALFRESCO WITH BBQ RECESS
- LARGE LAUNDRY, WITH HALF GLASS EXTERNAL DOOR
- QUALITY POWDER COATED WINDOWS AND SLIDING DOORS
- SUPERIOR QUALITY DOOR FURNITURE
- QUALITY TAPWARE AND BATHROOM FITTINGS
- GENEROUS HALLWAYS AND OPENING
- IDEAL FAMILY HOUSE, PERFECT FOR ENTERTAINING
- 90mm TIMBER FRAMED BRICK VENEER CONSTRUCTION
- COLORBOND STEEL ROOF

Floor Area- 258 m²
Alfresco/Patio- 33 m²
Total Area- 291 m²
31.3 Sqs



THE RIGHT CHOICE
WHEN QUALITY MATTERS.

PHONE- (02) 6551 0445 OR 0438 513 811 AFTER HOURS

VISIT OUR NEW DISPLAY HOMES FOR MORE INFORMATION AT 19-21 EDINBURGH DRIVE TAREE. OPEN FROM - 11.00 to 5.00PM WEDNESDAY TO FRIDAY and 10.00 to 3.00PM SATURDAY TO SUNDAY