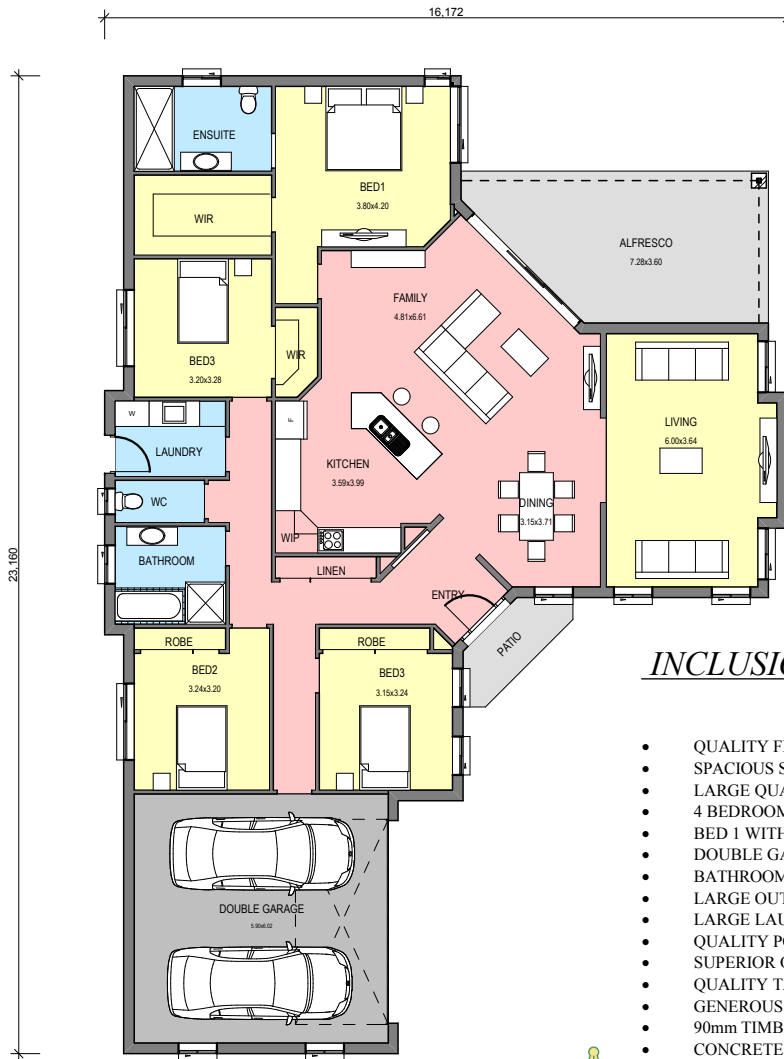




The Bordeaux 28



Floor Area- 233 m²
 Alfresco/Patio- 26m²
 Total Area - 259 m²
 28 Sqs

INCLUSIONS

- QUALITY FINISHED HOMES
- SPACIOUS SEPARATE LIVING FAMILY ROOMS
- LARGE QUALITY KITCHEN WITH CORNER PANTRY
- 4 BEDROOMS WITH BUILT IN ROBES
- BED 1 WITH WIR AND ENSUITE
- DOUBLE GARAGE WITH INTERNAL ACCESS
- BATHROOM WITH SEPARATE WC
- LARGE OUTDOOR LIVING AREA/ALFRESCO
- LARGE LAUNDRY, WITH HALF GLASS EXTERNAL DOOR
- QUALITY POWDER COATED WINDOWS AND SLIDING DOORS
- SUPERIOR QUALITY DOOR FURNITURE
- QUALITY TAPWARE AND BATHROOM FITTINGS
- GENEROUS HALLWAYS AND OPENINGS
- 90mm TIMBER FRAMED BRICK VENEER CONSTRUCTION
- CONCRETE TILE ROOF



THE RIGHT CHOICE
 WHEN QUALITY MATTERS.

PHONE- (02) 6551 0445 OR 0438 513 811 AFTER HOURS

VISIT OUR NEW DISPLAY HOMES FOR MORE INFORMATION AT 19-21 EDINBURGH DRIVE TAREE. OPEN FROM - 11.00 to 5.00PM WEDNESDAY TO FRIDAY and 10.00 to 3.00PM SATURDAY TO SUNDAY

COPYRIGHT SORENSEN AND CALDON PTY LTD. NOT TO BE USED OR COPIED WITHOUT PERMISSION.